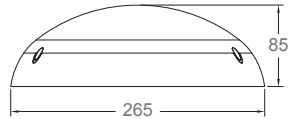


OPERATING MANUAL

Doris D265 - Basic

Important: Please read the instruction manual carefully prior to installation and keep it for future reference.



Ordering code	Product Fitting series	Power (W)	Function Description
D265 12 000	D265	12	Basic LED Fixture

Mounting: Wall or Ceiling

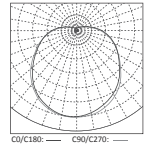
Light features:

Ra: >80

Life Time: 5 years

Light Source: LED SMD2835

Input: 220V-240VAC 50/60Hz



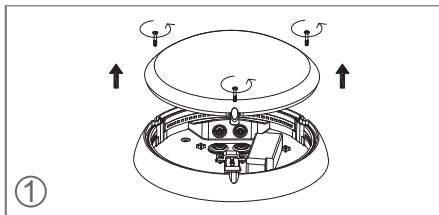
Accessories

No.	Pic.	Qty.	Usage
1		3	Fix light
2		3	Rawl plug
3		1	Vandal proof screw tool
4		3	Plastic washer
5		2	Fix cable clip
6		1	Cable clip

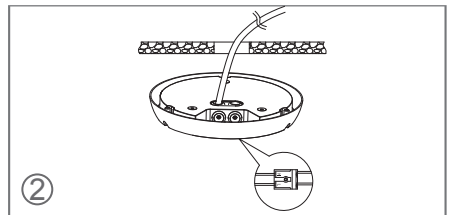
Color Temperature Code

Code	Color temperature	CCT(K)	Lumen
30K	Warm White	3000	1116
40K	Natural White	4000	1188
50K	Cool White	5000	1212

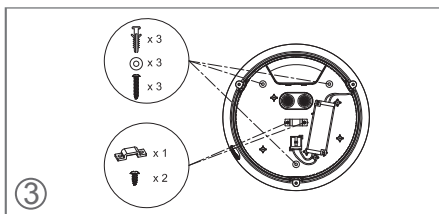
Installation



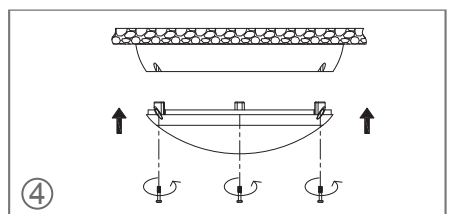
Unscrew the diffuser anticlockwise and vertically remove it.



Cut off the power. Thread the input cable through the rubber plug to the fixture. Connect the L, N wire referring to the wiring diagram.

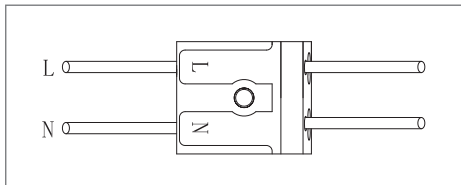


- Knock the rawl plugs into the pre-drilled holes on ceiling/wall. Wear plastic washers on self-tapping screws and tighten them to fix the fixture on ceiling/wall.
- Install the cable clip.



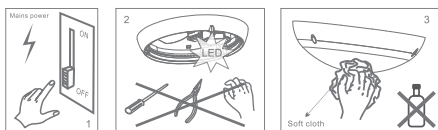
Mount the diffuser onto the base with screws. Resume the power.

Wiring



Maintenance

1. Cut off the main power first.
2. Don't touch LEDs while maintaining or cleaning.
3. Don't use chemicals to clean the fixture.



Environmental protection: waste electrical products should not be disposed of with household waste. Please recycle where facilities exist. Check with your local authority or retailer for recycling advice.



Caution

1. The product must be installed by professional technicians and power supply must be cut off before installation.
2. The diameter for AC input wire is 0.75mm² (complying with 60245 IEC57), which complies with the latest IEE electrical standards or national standards.
3. Do not touch the electronic circuit and its components.
4. Contact an authorised technical service centre for any repairs possibly required use only original spare parts.
5. Do not touch LED while installing or maintaining.
6. Sealing the entrance hole with glue after install is needed.
7. The light source contained in this luminaire shall only be replaced by the manufacturer or his service agent or a similar qualified person.



IP65

IK10



5 year warranty

